



# MONTHLY MEMBERSHIP PROGRESS REPORT

District 22 A

Results as of: 05/31/2019

GMT: MAHESH CHITNIS

LOCATION MARYLAND

GMT CA

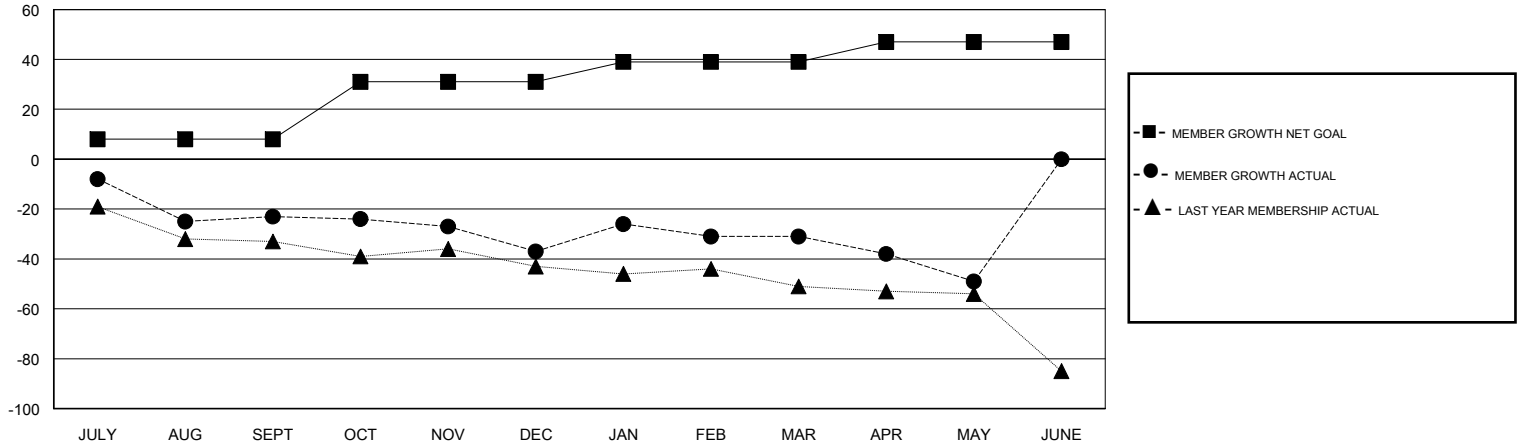
Clubs			
RESULTS FOR 2018-2019			
QUARTER	NEW CLUB GOAL	NEW CLUBS	DROPPED CLUBS
JULY/AUG/SEPT	0	0	0
OCT/NOV/DEC	1	0	0
JAN/FEB/MAR	0	0	0
APR/MAY/JUNE	0	0	1

Members			
RESULTS FOR 2018-2019			
QUARTER	MEMBER GROWTH NET GOAL	MEMBER GROWTH ACTUAL	DROPPED MEMBERS ACTUAL (including transfers)
JULY/AUG/SEPT	8	12	32
OCT/NOV/DEC	23	9	22
JAN/FEB/MAR	8	25	13
APR/MAY/JUNE	8	15	30

GOALS AND ACTUAL NEW CLUBS CUMULATIVE



GOALS AND ACTUAL MEMBERS CUMULATIVE



DROPPED CLUBS: 1
------------------

18 CLUBS OF 28 ADDED 1 OR MORE NEW MEMBERS

GENDER DISTRIBUTION	
MALE	465 (64.23%)
FEMALE	259 (35.77%)
Women Percentage Fiscal Year Goal: 2%	

DROPPED MEMBERS	
DECEASED	13
CLUB CANCELLED	6
OTHER	78
<b>TOTAL</b>	<b>97</b>

[CLICK HERE FOR CUMULATIVE MEMBERSHIP DATA](#)

TOTAL FAMILY UNIT MEMBERS	142
FAMILY MEMBERS PAYING HALF DUES	73